

To: Chair & Members of the Council

The Arc  
High Street  
Clowne  
S43 4JY

Tuesday, 25th February 2020

Contact: Nicola Calver  
Telephone: 01246 217753  
Email: [nicola.calver@ne-derbyshire.gov.uk](mailto:nicola.calver@ne-derbyshire.gov.uk)

Dear Councillor

**COUNCIL – WEDNESDAY, 4TH MARCH, 2020 AT 10:00**  
**AGENDA ITEM 7 – APPENDIX B – UPDATED POLICIES MAP**

Please find enclosed a copy of the Updated Policies Map – Appendix B to Agenda Item 7 for the above meeting.

Yours faithfully



Joint Head of Corporate Governance & Monitoring Officer



**Bolsover**  
District Council

**We speak your language**  
Polish **Mówimy Twoim językiem**  
Slovak **Rozprávame Vaším jazykom**  
Chinese **我们会说你的语言**

**If you require this agenda in large print  
or another format please call us on 01246 217753**

If you require an adjustment to enable you to participate in or access the meeting  
please contact the Governance Team at least 72 hours before the meeting starts.



**Local Plan**  
for  
**Bolsover District**  
(March 2020)

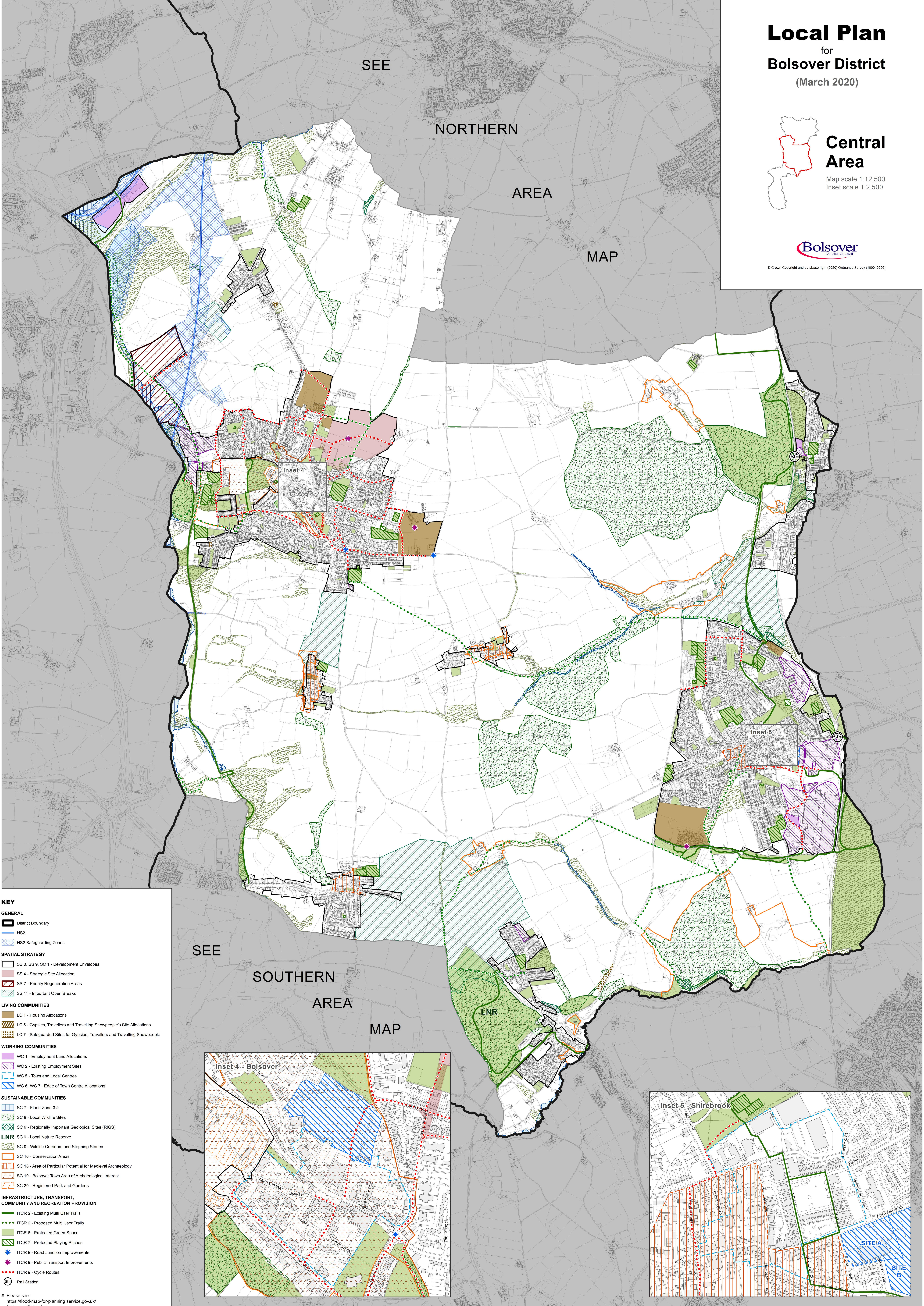


**Central Area**

Map scale 1:12,500  
Inset scale 1:2,500



© Crown Copyright and database right (2020) Ordnance Survey (100019526)



**KEY**

**GENERAL**

- District Boundary
- HS2
- HS2 Safeguarding Zones

**SPATIAL STRATEGY**

- SS 3, SS 9, SC 1 - Development Envelopes
- SS 4 - Strategic Site Allocation
- SS 7 - Priority Regeneration Areas
- SS 11 - Important Open Breaks

**LIVING COMMUNITIES**

- LC 1 - Housing Allocations
- LC 5 - Gypsies, Travellers and Travelling Showpeople's Site Allocations
- LC 7 - Safeguarded Sites for Gypsies, Travellers and Travelling Showpeople

**WORKING COMMUNITIES**

- WC 1 - Employment Land Allocations
- WC 2 - Existing Employment Sites
- WC 5 - Town and Local Centres
- WC 6, WC 7 - Edge of Town Centre Allocations

**SUSTAINABLE COMMUNITIES**

- SC 7 - Flood Zone 3 #
- SC 9 - Local Wildlife Sites
- SC 9 - Regionally Important Geological Sites (RIGS)
- SC 9 - Local Nature Reserve
- SC 9 - Wildlife Corridors and Stepping Stones
- SC 16 - Conservation Areas
- SC 18 - Area of Particular Potential for Medieval Archaeology
- SC 19 - Bolsover Town Area of Archaeological Interest
- SC 20 - Registered Park and Gardens

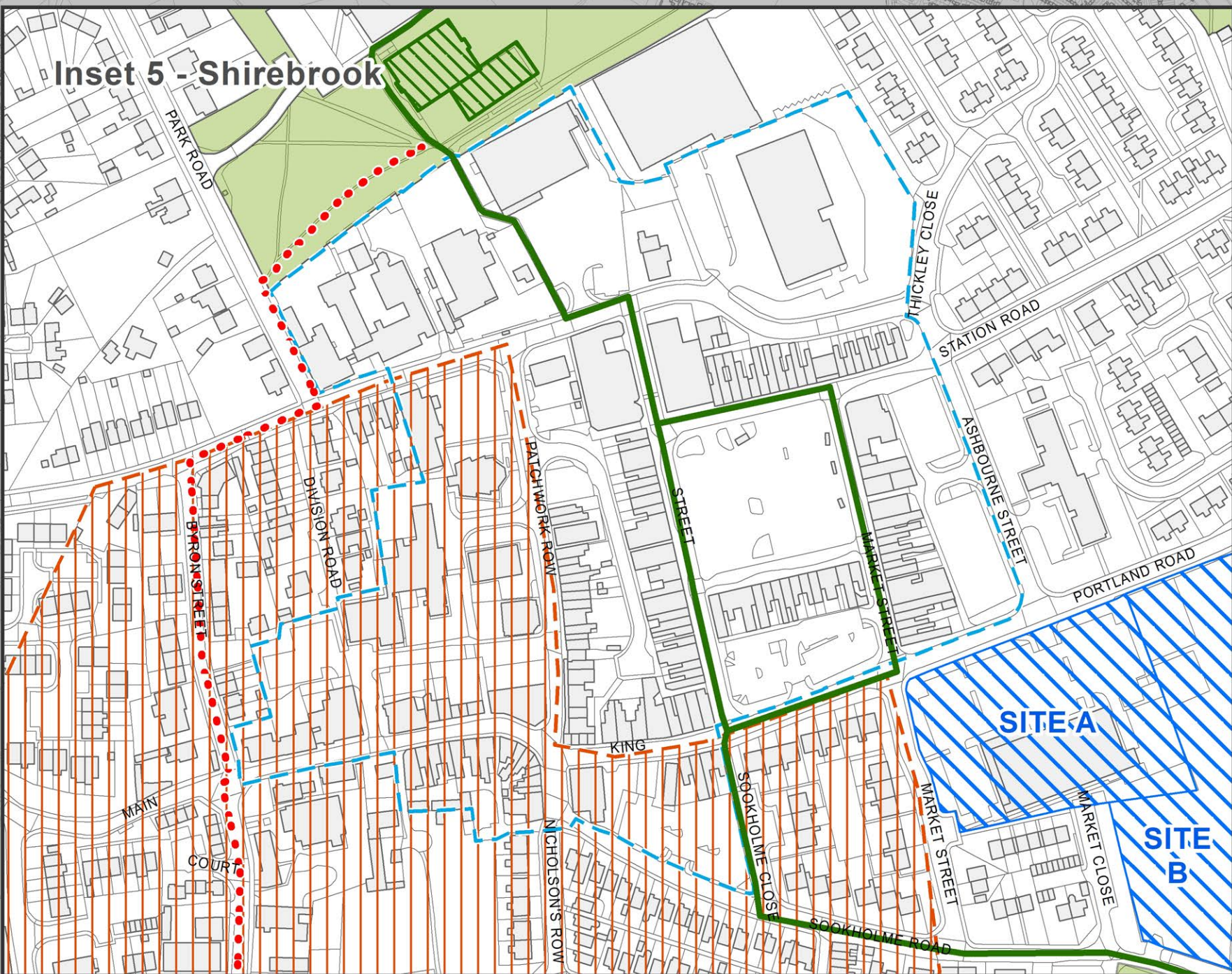
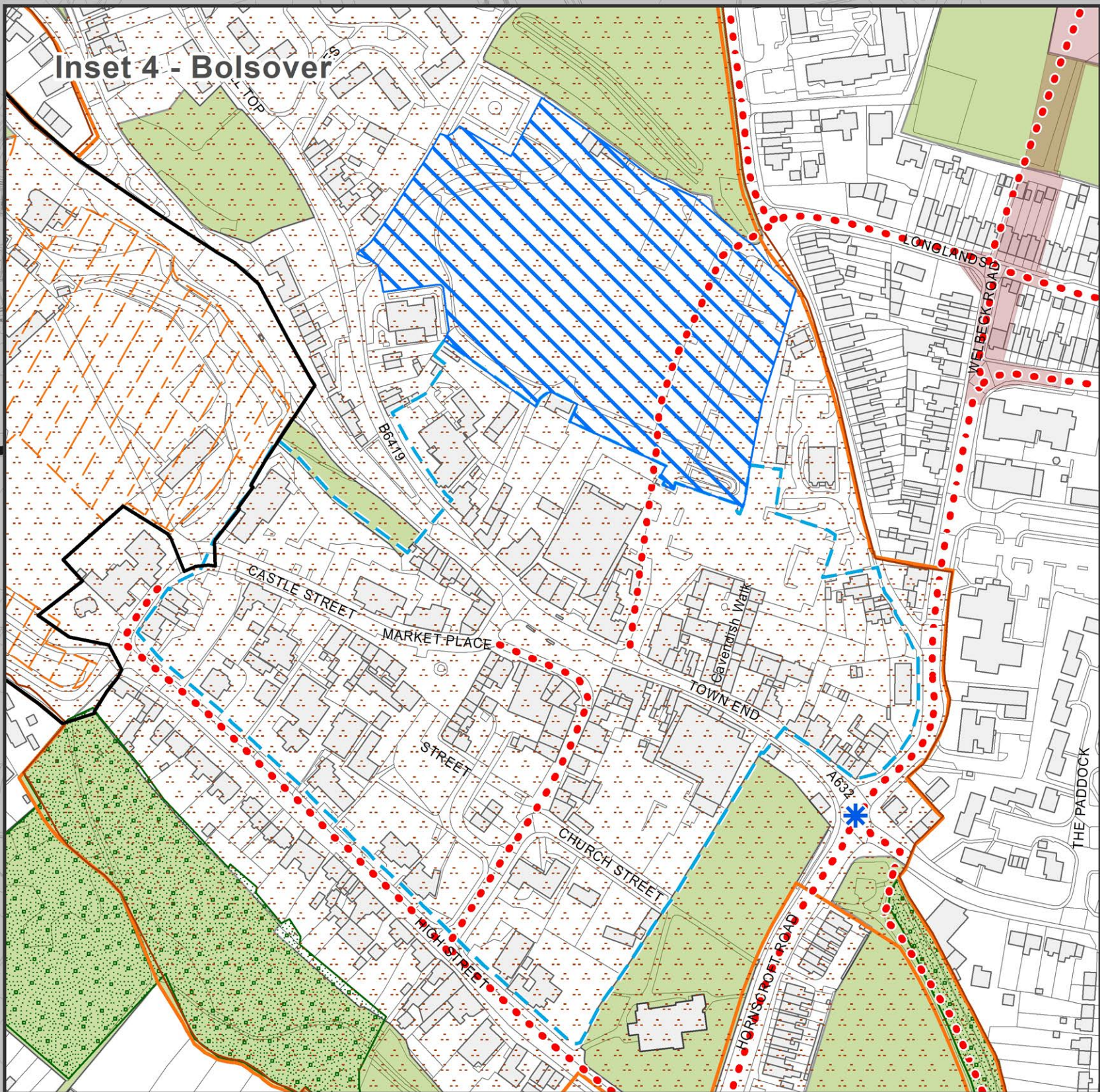
**LNR**

- SC 9 - Local Nature Reserve

**INFRASTRUCTURE, TRANSPORT, COMMUNITY AND RECREATION PROVISION**


- ITCR 2 - Existing Multi User Trails
- ITCR 2 - Proposed Multi User Trails
- ITCR 6 - Protected Green Space
- ITCR 7 - Protected Playing Pitches
- ITCR 9 - Road Junction Improvements
- ITCR 9 - Public Transport Improvements
- ITCR 9 - Cycle Routes
- Rail Station

# Please see: <https://food-map-for-planning.service.gov.uk/> for more information.



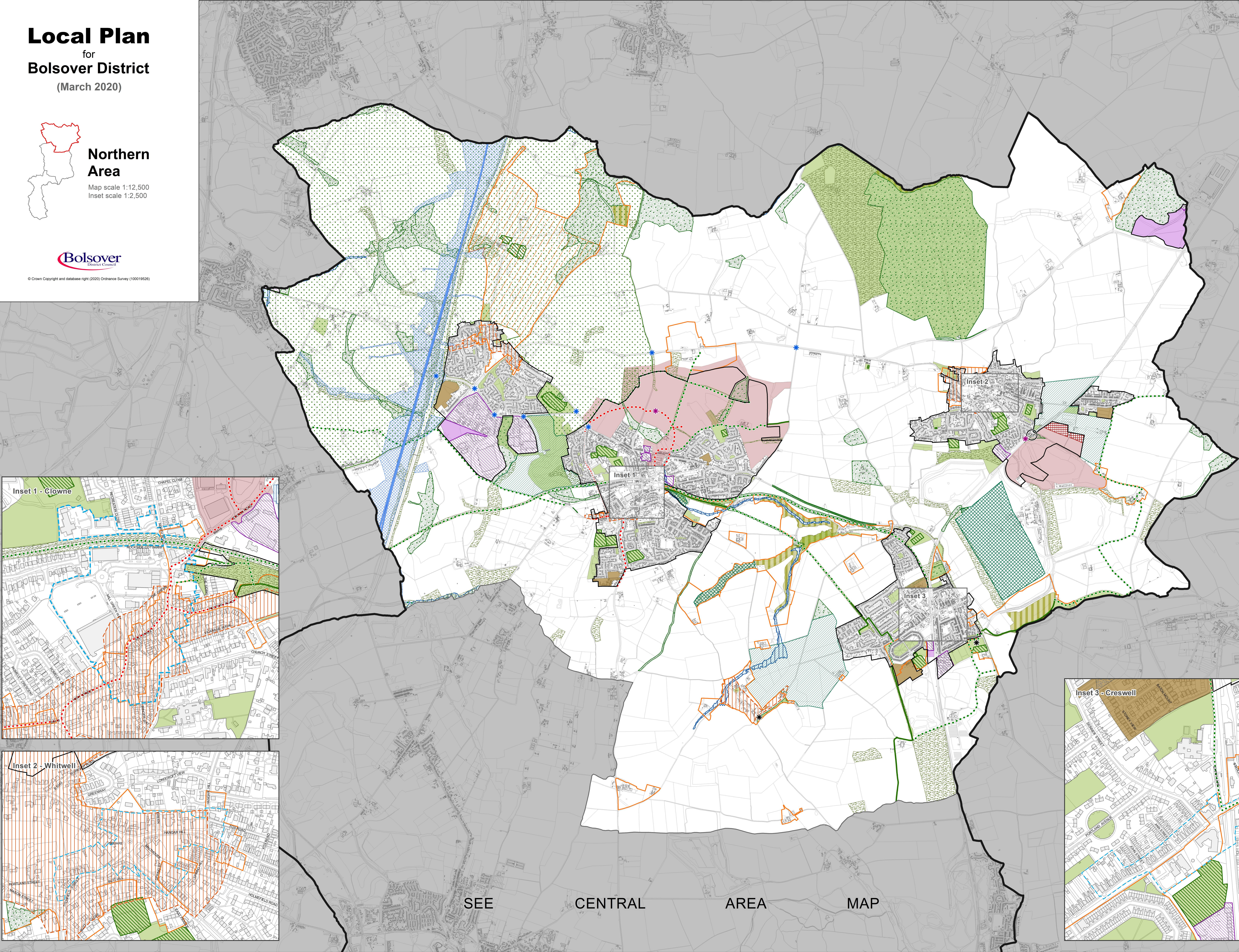


Local Plan  
for  
Bolsover District  
(March 2020)

 Northern  
Area  
Map scale 1:12,500  
Inset scale 1:2,500



© Crown Copyright and database right (2020) Ordnance Survey (100019526)



**KEY**

**GENERAL**

- District Boundary
- HS2
- HS2 Safeguarding Zones

**SPATIAL STRATEGY**

- SS 3, SS 9, SC 1 - Development Envelopes
- SS 5, SS 6 - Strategic Site Allocation
- SS 6 - Area of Transition
- SS 10 - Green Belt
- SS 11 - Important Open Breaks

**LIVING COMMUNITIES**

- LC 1 - Housing Allocations

**WORKING COMMUNITIES**

- WC 1 - Employment Land Allocations
- WC 2 - Existing Employment Sites
- WC 5 - Town and Local Centres

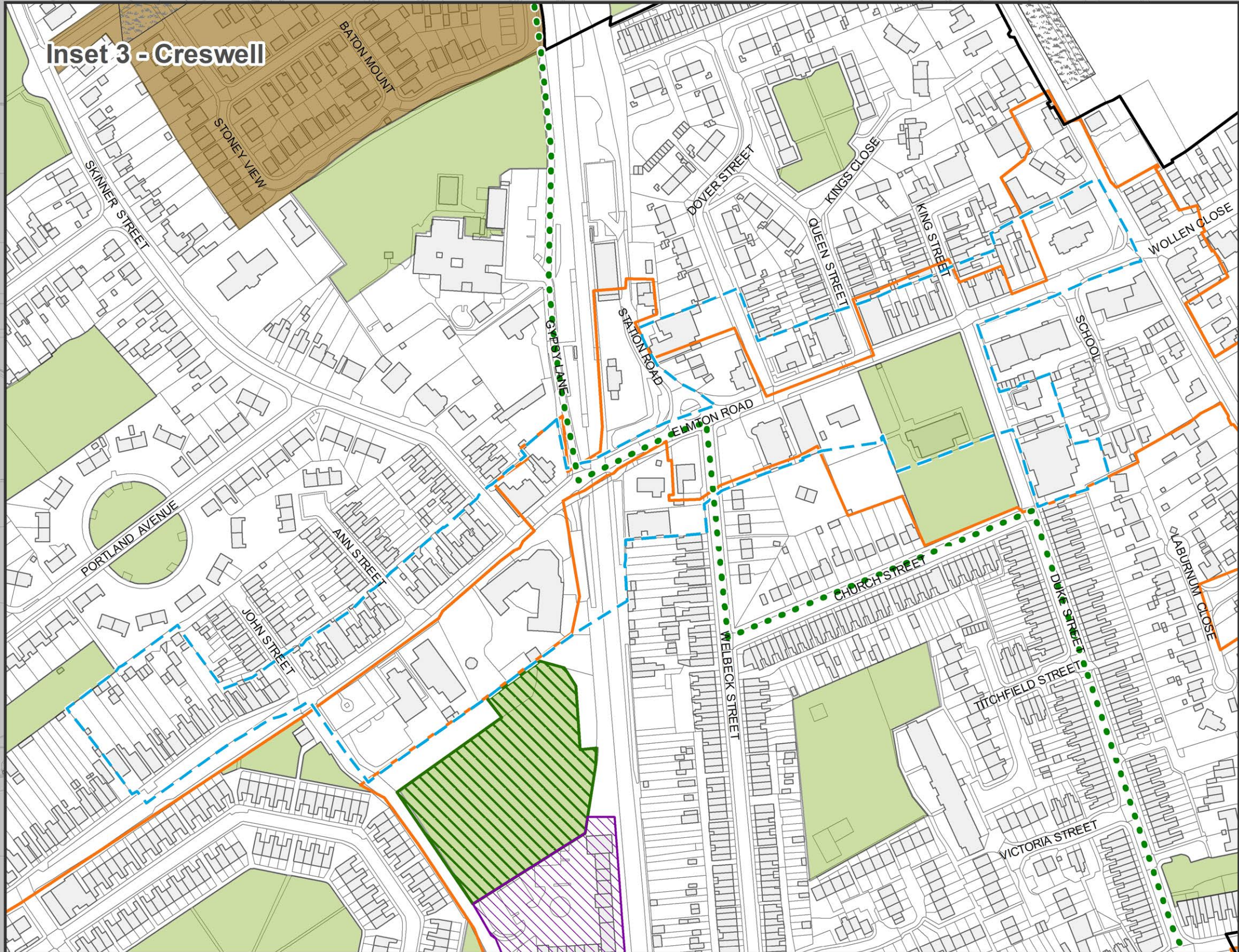
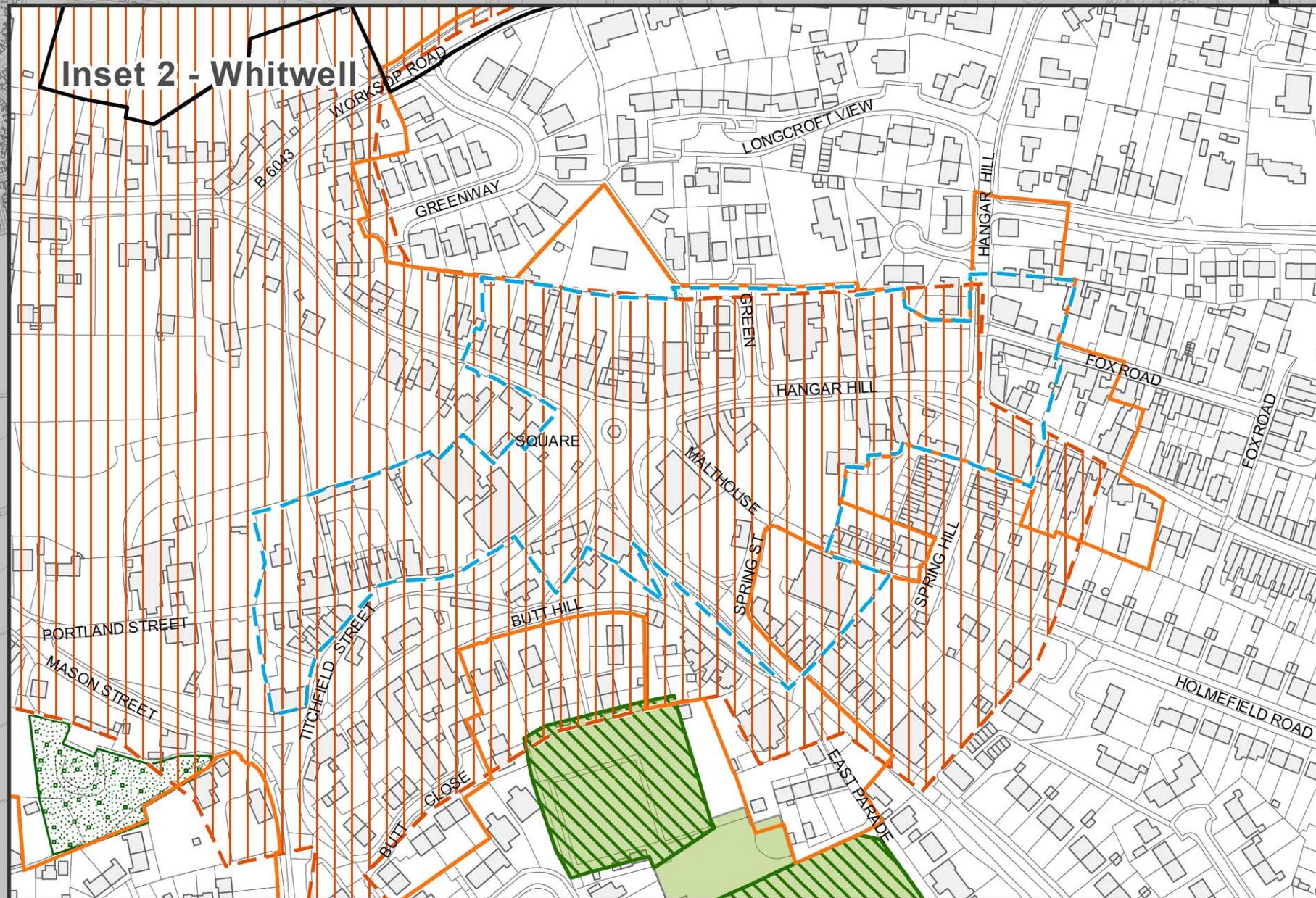
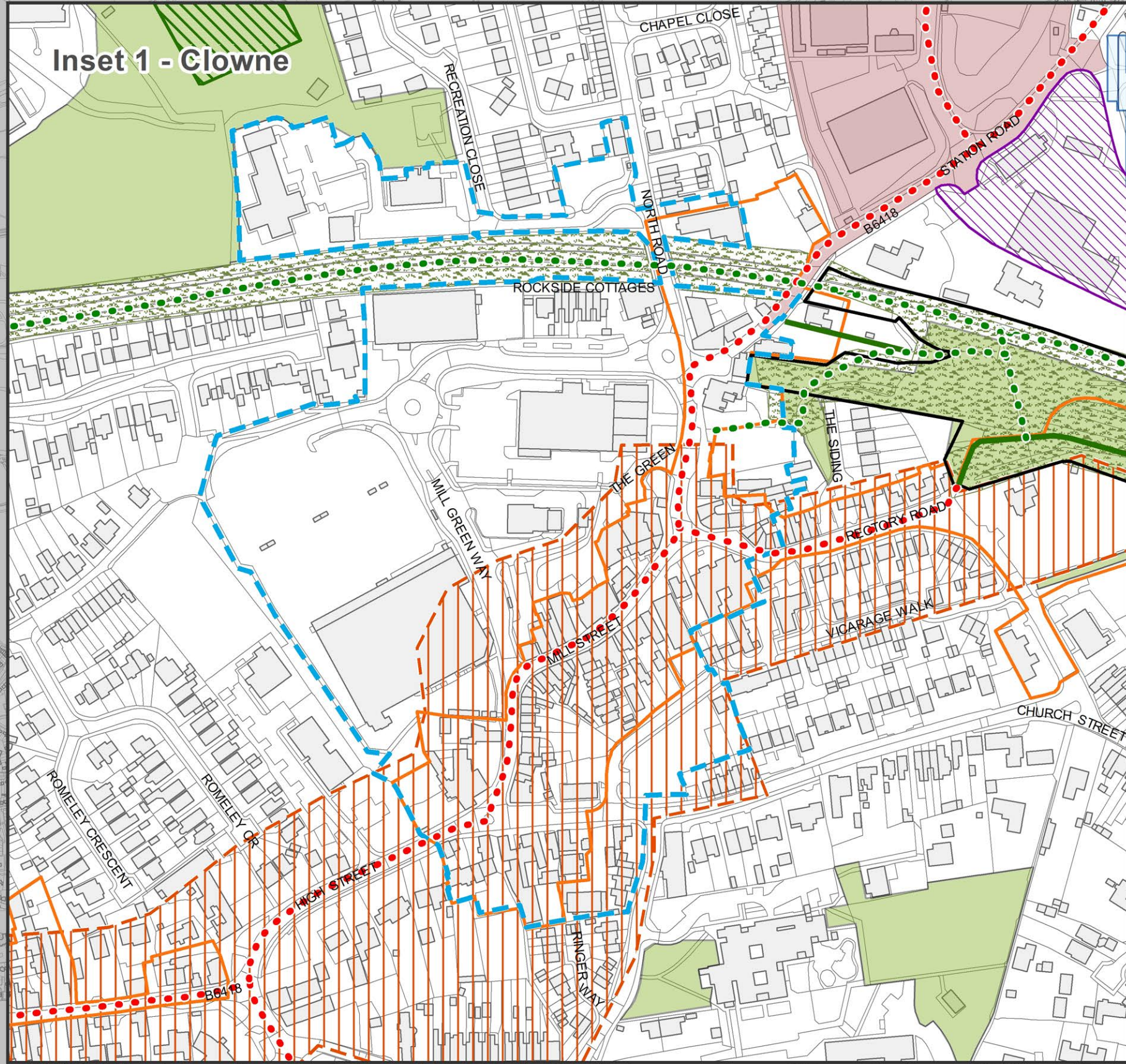
**SUSTAINABLE COMMUNITIES**

- SC 7 - Flood Zone 3 #
- SC 9 - SSSI Sites
- SC 9 - Local Wildlife Sites
- SC 9 - Regionally Important Geological Sites (RIGS)
- SC 9 - Wildlife Corridors and Stepping Stones
- SC 16 - Conservation Areas
- SC 18 - Area of Particular Potential for Medieval Archaeology
- SC 20 - Registered Park and Gardens

**INFRASTRUCTURE, TRANSPORT, COMMUNITY AND RECREATION PROVISION**

- ITCR 2 - Existing Multi User Trails
- ITCR 2 - Proposed Multi User Trails
- ITCR 6 - Protected Green Space
- ITCR 6 - Protected Village Greens
- ITCR 7 - Protected Playing Pitches
- ITCR 9 - Road Junction Improvements
- ITCR 9 - Public Transport Improvements
- ITCR 9 - Cycle Routes
- Rail Station

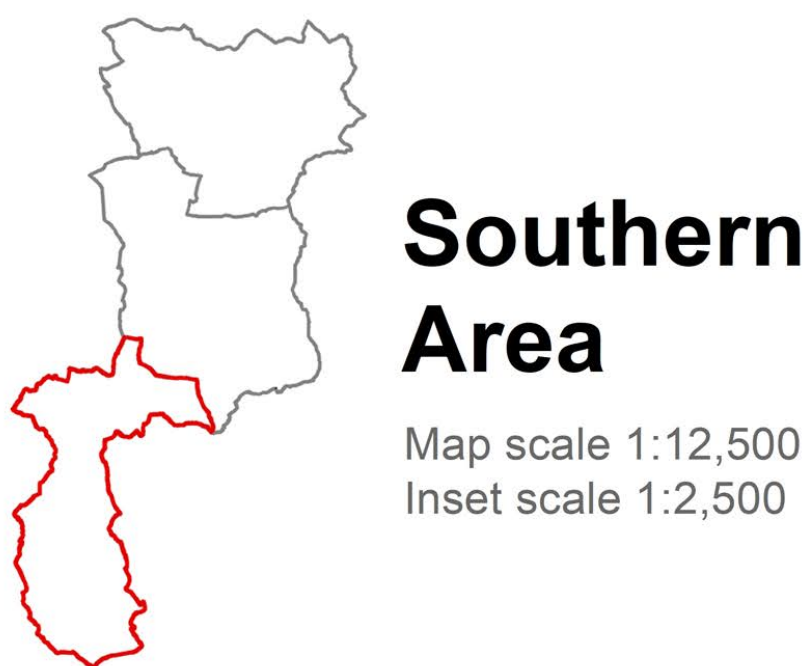
# Please see: <https://flood-map-for-planning.service.gov.uk/> for more information.



SEE CENTRAL AREA MAP



Local Plan  
for  
Bolsover District  
(March 2020)



Bolsover  
District Council

© Crown Copyright and database right (2020) Ordnance Survey (100019626)

SEE  
CENTRAL  
AREA  
MAP

- KEY**
- GENERAL**
- District Boundary
  - HS2
  - HS2 Safeguarding Zones
- SPATIAL STRATEGY**
- SS 3, SS 9, SC 1 - Development Envelopes
  - SS 11 - Important Open Breaks
- LIVING COMMUNITIES**
- LC 1 - Housing Allocations
  - LC 5 - Gypsies, Travellers and Travelling Showpeople's Site Allocations
  - LC 7 - Safeguarded Sites for Gypsies, Travellers and Travelling Showpeople
- WORKING COMMUNITIES**
- WC 1 - Employment Land Allocations
  - WC 2 - Existing Employment Sites
  - WC 4 - Rough Close Works Explosive Safeguarding Zones
  - WC 4 - Rough Close Works Area of Wider Operations
  - WC 5 - Town and Local Centres
  - WC 8 - Edge of Town Centre Allocations
- SUSTAINABLE COMMUNITIES**
- SC 7 - Flood Zone 3 #
  - SC 9 - Local Wildlife Sites
  - LNR SC 9 - Local Nature Reserve
  - SC 9 - Wildlife Corridors and Stepping Stones
  - SC 15 - Hazardous Substances Consent Zones
  - SC 16 - Conservation Areas
  - SC 18 - Area of Particular Potential for Medieval Archaeology
  - SC 20 - Registered Park and Gardens
- INFRASTRUCTURE, TRANSPORT, COMMUNITY AND RECREATION PROVISION**
- ITCR 2 - Existing Multi User Trails
  - ITCR 2 - Proposed Multi User Trails
  - ITCR 6 - Protected Green Space
  - ITCR 7 - Protected Playing Pitches
  - ITCR 9 - Cycle Routes

# Please see:  
<https://flood-map-for-planning.service.gov.uk/>  
for more information.

